

SCOUTING GUIDE TO COVID-19



A GUIDE FOR YOUR VENTURER SCOUT UNIT

Scouts NSW abides by and always endorses the current NSW Health Public Health Orders. All Scouts NSW guidelines should be read in association with the NSW Health Guidelines and Laws. In the event of a discrepancy or conflict in directions, the NSW Government and NSW Health guidelines takes precedent

Please ensure you check the latest NSW Health Guidelines and Laws applicable to your area before any Scouting Meeting. You can search for the address of your hall or venue for specific rules and restrictions applicable to that area by visiting <https://www.nsw.gov.au/covid-19/rules>

WHO NEEDS TO BE VACCINATED?

To meet at Scouts, all Adults, Youth Helpers and Venturer Scouts aged 16 and above will need to **have received two doses** of a COVID-19 vaccine. Any person aged 16 and above who has not been fully vaccinated is required to comply with the NSW Government stay-at-home orders.

Venturer Scouts aged 14-15 years are encouraged to receive two doses of a COVID-19 vaccine before they attend Scouts. To gather outdoors, 14-15-year-old Venturer Scouts, are not required to have been fully vaccinated against COVID-19.

HOW MANY VENTURER SCOUTS CAN MEET?

Meeting in the hall (Greater Sydney)

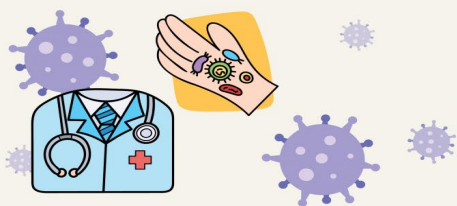
Venturer Scouts under the age of 16 and unvaccinated cannot currently meet inside if they have not received two doses of a COVID-19 vaccine. NSW Government legislation clearly states unvaccinated

young people, aged under 16 can access all outdoor settings but can visit indoor venues only with fully vaccinated members of their household.

Where the Venturer Unit is all aged 16 and above, and all members are fully vaccinated, a maximum of 20 people (aged 16 and above) can gather at an indoor recreation facility. 1 person per 4sqm rule applies and the lesser of this calculated result or the 20-person limit can meet. All participants, including Venturer Scouts and Leader **must** wear a facemask whilst indoors and all participants must adhere to 1.5m physical distance between themselves and others.

Meeting outside e.g. in a park, sports field, bush area (Greater Sydney)

A maximum of 20 people (regardless of age) can gather in outdoor settings.



SCOUTING GUIDE TO COVID-19



At all times during the activity, anyone over the age of 12 **must** carry a facemask and wear this when physical distancing is difficult. All members **must** adhere to 1.5m physical distance between themselves and others.

Meeting in the hall (Regional NSW)

A maximum of 20 people (regardless of age) can gather at indoor recreation facilities. 1 person per 4sqm rule applies and the lesser of this calculated result or the 20-person limit can meet. Anyone over the age of 12 **must** wear a facemask whilst indoors and all participants must adhere to 1.5m physical distance between themselves and others.

Meeting outside e.g. in a park, sports field, bush area (Regional NSW)

A maximum of 20 people (regardless of age) can gather in outdoor settings. At all times during the activity, anyone over the age of 12 **must** carry a facemask and wear this when physical distancing is difficult. All members must adhere to 1.5m physical distance between themselves and others.

DO WE NEED TO WEAR A MASK?

Venturer Scouts and Leaders must always wear a mask while indoors. At all times during outdoor gatherings, members must carry a mask and should wear this when physical distancing is difficult.

DO WE NEED TO CHECK-IN?

Scouts NSW venues and halls are required to display and use the NSW Government QR code so members and visitors can check in using the Service NSW app. All adults and Venturer Scouts **MUST** check-in using the Service NSW QR Code.

Version 1

Dated: 26-September-2021

Where possible, users of smart devices should use this process to check-in and check-out of the venue.

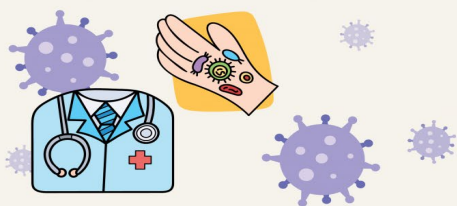
If it is not possible for a person to check in using a device (e.g. a Venturer Scout without their own phone), there must be an alternate sign-in method. The alternate sign-in method must record the contact details of the person and be retained for at least 28 days. Scouts NSW must provide this to NSW Health, if requested within 24 hours in a digital format.

Scouts NSW recommends and prefers the use of the Service NSW Business Online Web Check-in form (over manual processes) to check in Youth Members on behalf of their parents. Information about this facility can be found by logging into the Business (Scout Hall Venue) registration for the COVID Check-In QR Code. This facility also allows for venue administrators to scan individuals in using their NSW Health Card. The Venue admin should share the link and credentials to the Business Online form with all section leaders who may need to use this function.

Leaders **MUST** not check-in youth members as dependants at Scout Halls or other venues (unless they are that Leader's own children). Leaders can use the manual sign-in process for unaccompanied Venturer Scouts. Parents who are remaining for the meeting can sign-in themselves and add their dependant youth member.

Parents are requested not to enter the hall when dropping off or picking up their child. They should gather outside





SCOUTING GUIDE TO COVID-19



and wait for leaders to escort youth members outside for collection.

DO WE NEED A COVID MARSHAL?

Yes, a COVID Check-in Marshal is required for all activities. A COVID Check-in Marshal can be a nominated Leader or Adult Helper who is responsible for ensuring that all attendees check-in using a QR Code or attendance record. The COVID Check-In Marshal can undertake other activities, but their primary responsibility should be to ensure all attendees check-in.

CAN MY VENTURER SCOUTS TRAVEL?

Domestic travel within NSW is permitted. Travel to Regional NSW is currently not permitted and members planning to travel should confirm their ability to travel on the NSW Government Website.

Carpooling is permitted where the adults in the car have received two doses of a COVID-19 vaccine. Scouts NSW two deep leadership policy MUST be adhered to when transporting youth members. Scouts NSW recommends Venturer Scouts aged 14-15 who are unvaccinated NOT carpool with people outside their family unit.

CAN MY VENTURER SCOUTS CAMP?

YES – Venturer Scouts can camp.

When camping, NSW Government Legislation requires members of Scouts NSW to follow the 1 person per 4sqm rule. Venturer Scouts can sleep in tents or indoor accommodation where the 1 person per 4sqm rule can be maintained. The exception to this would be when the Venturer Scout is camped with their normal household members.

Version 1
Dated: 26-September-2021

Fully vaccinated Leaders must also observe the 1 person per 4sqm rule in tents and indoor accommodation.

Bunk accommodation can be used, only where there is one person using each double bunk.

CAN MY VENTURER SCOUTS BUSHWALK?

YES – Venturer Scouts can go on a bushwalk.

A maximum of 20 people can attend the bushwalk. All members must remain physically distanced with 1.5m between participants during the activity.

Scouts NSW recommends each participant brings their own food and drink and does not share these items with others. Frequent handwashing and use of hand sanitiser is encouraged.

A VENTURER SCOUT IS UNWELL

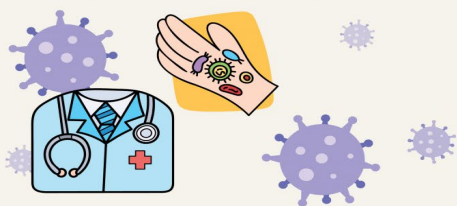
Venturer Scouts and parents should not attend the Unit meeting if they feel unwell. We know this can be upsetting for our Scouts, but if they are unwell, they should stay home and get better, to ensure when they return to the Unit Meetings they can participate fully.

If a Venturer Scout becomes unwell whilst at the Unit Meeting, leaders should contact the parent or caregiver and organise to have the Venturer Scout picked up.

COVID SAFE CLEANING

The area in which you meet should be kept clean and tidy. Washing hands with soap under running water and using disposable hand





SCOUTING GUIDE TO COVID-19



towels can help keep our members healthy and safe. Hand sanitiser should be made available and used frequently.

Participants may choose to wear gloves when encountering frequently touched surfaces such as door handles, handrails, tabletops, light switches, shared equipment, shared tools, telephones, kitchen equipment, sinks, basins, bathrooms, and toilets. Frequently touched surfaces should be cleaned and regularly disinfected by hand. Use detergent solution and disinfection (follow instructions) or scrub by hand using detergent/disinfectant wipes.

A MEMBER IS A CLOSE CONTACT

If one of your Venturer Scouts or Leaders is considered a Close Contact by NSW Health, they will need to follow the guidance and advice of NSW Health. They should not attend the Venturer Scouts Unit meeting until they have been cleared by NSW Health.

A MEMBER HAS COVID

If one of your Venturer Scouts or Leaders has been diagnosed with COVID they must not attend the Venturer Scout Unit meeting. NSW Health will issue directives to the individual and perform contact tracing. Everyone must follow the guidance and advice of NSW Health. They should not attend the Venturer Scout Unit meeting until they have been cleared by NSW Health.

You will need to contact your Region Commissioner and Region Office to make them aware of the positive member. They will be able to assist you with support as needed. It is also recommended this positive case be logged in the

Version 1

Dated: 26-September-2021

Scouts NSW WHS Platform as an 'incident', not to be investigated but to be noted formally.

I HAVE COMPROMISED IMMUNITY

If you, one of your leaders or Venturer Scouts has compromised immunity (e.g. is currently receiving chemotherapy treatment) the Unit Council may make the decision to mandate everyone in attendance at a Venturer Scout Unit meeting must be vaccinated. Equally, you can suggest, for their own safety, the individual with compromised immunity not attend a specific Unit Meeting. It is important to ensure any decision is fair and equitable for all members and made considering the Scouts Australia Vaccination policy.

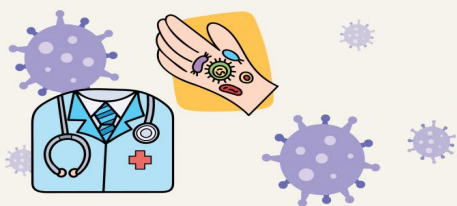
CAN WE HAVE A LARGER ACTIVITY?

A maximum of 20 people (regardless of age) can gather in outdoor settings. All members should be physically distanced remaining 1.5m apart during activities. This means if you wish to have a District Activity, it can only be done only where the gathering size does not exceed 20 people. This includes youth members, leaders, and adult assistants.

CHECKING A VACCINATION STATUS

Although there is no requirement for the formation or activity Leader in charge to check the vaccination status of every member, it is acceptable to ask for proof of vaccination for activity participants. All members are expected to follow the Scout Law and the Law of NSW and be honest about their vaccination status. All adults and Venturer Scouts MUST check-in using the Service NSW QR code





SCOUTING GUIDE TO COVID-19



which, in time will also show an individual's vaccination status.

SHARING EQUIPMENT

At a Venturer Scout Unit meeting it is common to share equipment such as ropes, compasses, balls, and stationery. Where possible, items should be cleaned and disinfected prior to use and before being put away. Venturer Scouts and other members touching these items should wash and dry their hands after use and apply hand sanitiser. Where possible, members should use their own pens and pencils, phones, and drink bottles rather than communal items at the activity location.

DO WE NEED A COVID SAFE PLAN?

Yes – Your Scout Hall, Training Room or outdoor activity will need a COVID Safe Plan. The Group Leader or delegate is responsible for completing this plan in conjunction with others. This plan may be the same or like your 2020 plan but should be reviewed to ensure it is in line with current Health Orders and everyone understands the contents of the plan.

Your plan will be submitted online and reviewed / approved by your Region Commissioner.

QUESTION NOT ANSWERED?

If your question has not been answered and the NSW Government Public Health Orders do not make sense, you can request further assistance or information by emailing

COVID.Scouting@nsw.scouts.com.au.